

«AMP»

ATLAS Mission Platform (AMP)



DATA First
From the Enterprise, to the **EDGE**

THE PROBLEM

Heaps of Data - Operating at greater than petabyte scale

Disparate Data Sources - Varied user base on dozens of systems

Complex Security Access - Various access control policies

Search Anxiety - Querying dozens of systems, wasting time conditioning data

THE SOLUTION

Heaps of Data - Built to scale in a modern linux distributed compute environment

Disparate Data Sources - Supporting 1000's of data types feeding a unified data layer

Complex Security Access - AMP persists access control eliminating wrongful access

Search Anxiety - A single pane of glass for your on premise data, accelerating time to insight

THE RESULT

This data focussed approach coupled with AMPs interoperability via a well documented API maximizes data experiences at enterprise hubs, and off line for remote environments. Never turning our back on those operating on low bandwidth networks at the edge.

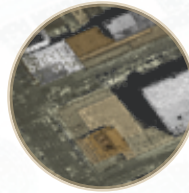


Specific

AMP provides a suite of mission specific data processors tuned for the expeditionary user. These data pipelines are designed to the specifications of multi-disciplined analysts and users on the go.



IMAGERY



ELEVATION



VIDEO



TEXT

Immersive

AMP provides intuitive workflows enabling users to discover, visualize, provision and transform data for use in their finishing tool of choice.



DISCOVER



VISUALIZE



ANALYZE



DEPLOY

AMP APPS

3rd Party APPS

Access

AMP extends its reach by exposing the ecosystem to developers, data scientists, and users through a robust, well documented API.

KEY FEATURES

- Scale-out architecture
- Leverages Hadoop framework
- Indexes and exposes file-based and streaming data sources
- Detects and processes hundreds of file types
- Extensible API
- Accredited for use on classified Department of Defense networks
- High performance distributed processing, memory, and storage
- Advanced entity extraction: geographic coordinates, place names, groups, individuals, and events
- Custom workflow automation
- Advanced transcoding options
- Hardware accelerated video processing

For more information about AMP:
SAPNS2.com/AtlasDS

