

STEW-R

Small Tactical Executive WAN Communications Solution

The Small Tactical Executive WAN Communications Solution - Rugged (STEW-R) is a smaller, more rugged, more capable, improved version of our field proven STEW. Designed from the ground up to meet the needs of the most agile Communicator, the STEW-R enables access to secured, classified voice, data, and video services over a multitude of commercial network technologies (Ethernet, Wi-Fi WAN, 4G/5G Cellular, MANET, Satcom, etc.) from even the most remote locations. The STEW-R supports the use of traditional Type 1 HAIPE devices to access classified networks, or users can leverage NSA's Commercial Solutions for Classified (CSfC) process.



The Ultimate Communications Appliance

The STEW-R is a dual router/VPN gateway appliance that incorporates a Sub U Systems Software Definable Network-Appliance™ (SDN-A™) technology paired with a Cisco Embedded Service Router (ESR) in a single, small, rugged appliance capable of being used in CSfC Comprised Solutions or with Type 1 HAIPE devices. SDN-A technology allows the user to "create" a networking appliance based on their preferred vendor's software based Virtualized Networking Function (VFN) capabilities. The SDN-A can support several virtual machine hypervisors, along with networking function virtual machines from companies such as Cisco, Aruba, Juniper, Palo Alto, Fortinet, IAS, etc. When used with the IAS ROS hypervisor, users can benefit from the STEW-R's cellular and Wi-Fi transport technologies.

DISN Enterprise Classified Travel Kit Gateway

The STEW-R is approved for use in the US Department of Defense DISN Enterprise Classified Travel Kit Gateway (DECTK-GW) program. The DECTK-GW program enables a Virtual Private Network (VPN) connection to the US DOD Secret IP Router Network (SIPRNet) via rapidly deployed portable solutions using virtually any Internet connection anywhere in the world. The DECTK-GW gateway provides access to classified data networks and classified voice calls through DISA's Enterprise Classified Voice over IP service.

IAS Router Operating System (ROS)

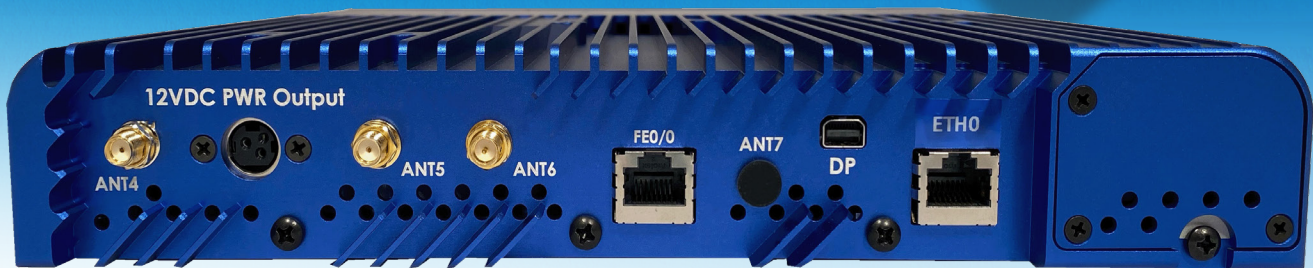
IAS Router Operating System (IAS ROS) is a secure, high performance, enterprise class IP router/VPN gateway that was custom developed from the ground up to support military and government deployable communications use cases. IAS ROS uses patented WAN technology management capability providing Communicators:

- ◀ Failover/failback across multiple WAN technologies (Ethernet, 4G/5G Cellular, Wi-Fi, etc.)
- ◀ Commercial National Security Algorithm (CNSA) IPsec (Suite B IPsec) mode of operation
- ◀ 802.11ax Wi-Fi 6 radios as either a traditional Wi-Fi access point and/or Wi-Fi client
- ◀ Deep packet inspection, advanced firewall functionality and SSL VPN obfuscation capabilities
- ◀ Support for enterprise-grade advanced routing protocols and capabilities
- ◀ Simple to use, web-based Graphical User Interface (GUI) and Command Line Interface (CLI)



STEW-R

Small Tactical Executive WAN Communications Solution



NSA Type 1 or Commercial Solutions for Classified

The STEW-R is THE premier executive communications solution; that supports the National Security Agency's (NSA) Commercial Solutions for Classified (CSfC) process or use of traditional Type 1 HAIPE devices (such as the General Dynamics Taclane® family of products or the Viasat® 250X or 250XS) for accessing classified networks anywhere, anytime.

NSA's CSfC program enables the use of commercially available security products to be used in layered solutions for protecting US Government and DOD classified information (voice, data, video, etc.) up to and including TS/SCI. NSA CSfC Comprised Solutions rely on implementing two (vendor diverse) layers of commercial IPSEC VPN cryptography.

CSfC benefits include:

- ◀ Reduction of overall size, weight, power and cost by removing Type 1 COMSEC item(s)
- ◀ Eliminates the concerns of using Type 1 COMSEC devices in "hostile" environments
- ◀ Ability to deploy cutting-edge technology from the commercial market

Form Factor

- ◀ 10" by 9.2" by 1U (1.6") (WxDxH)
- ◀ Weighs < 7 lbs.
- ◀ More robust enclosure (machined aluminum) and power connector (LEMO)
- ◀ User accessible cellular modern slim slots that feature a tool-less captive SIM slot
- ◀ Built-in Uninterruptible Power Supply (UPS) logic with user accessible/replaceable upgradable battery
- ◀ Ability to provide power to HAIPE devices, eliminating the need for the HAIPE PSU

Key Features

- ◀ Black/Gray & Red VPN Gateways in a single device
- ◀ Wi-Fi Client, offering the ability to navigate past hotel Wi-Fi login screens
- ◀ Support for up to two built in 4G/5G cellular radios
- ◀ Easy to use GUI that can be tailored to the user
- ◀ Supports both Type 1 and CSfC use

Security

- ◀ NSA Commercial Solutions for Classified (CSfC)
- ◀ FIPS 140-2 Validated
- ◀ NIAP Common Criteria Certified options
- ◀ DOD DISN DECTK-GW Program
- ◀ DISA UC APL listed and JITC tested

