

# FADE

## Fusion Analysis & Development Effort

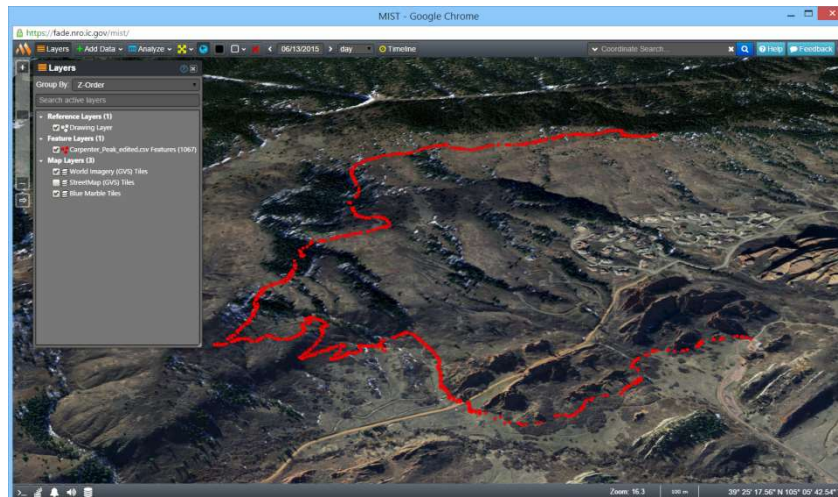


**FADE:** Fusion Analysis & Development Effort (FADE) is an NRO/Mission Integration Directorate program tasked with developing customized tools and multi-INT analytic methodologies using an agile, versatile approach to meet customer requirements. The tools within the FADE portfolio include **MIST**, **Watchbox**, **Intelbook**, and **Linx**, all supported by FADE's backend architecture called **GeoFusebox**.

**MIST:** Multi-INT Spatial-Temporal (MIST) tool suite enables visualization and analytics of large volumes of spatial and temporal multi-INT data, while allowing for trending and pattern-of-life analysis. There are both web-based and desktop versions of MIST available to the user.

**Watchbox:** Watchbox is an automated alerting tool which alerts the user when activities of interest, based on the user's criteria, are met. Watchbox continuously runs on GeoFusebox.

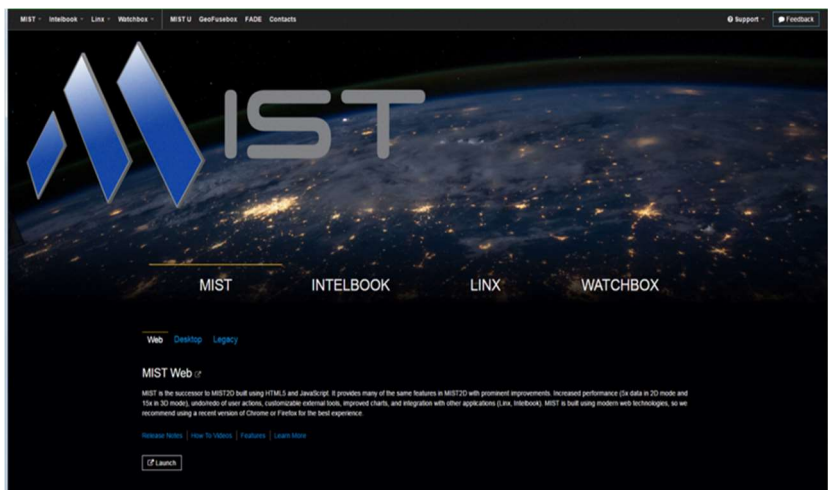
**Intelbook:** Intelbook captures target and object creation, activity-based intelligence analysis, and user collaboration in one location.



Here is an example from MIST showing publicly available commercial imagery via *DigitalGlobe* and human-generated training data (red track).

**Linx:** Linx enables analysts to show networks and relationships of objects stored within FADE's unified object model. Linx can seamlessly transition the view of an object to Intelbook.

**GeoFusebox:** GeoFusebox is the power behind FADE! GeoFusebox uses open geospatial consortium standards while allowing access to hundreds of PKI-enabled multi-INT data sources for the user, within IC ITE.



### CONTACT US

**FADE PM/COFR**  
(703) 808-2431

**FADE Contractor PM**  
(303) 676-4285